

## TAHOMA-LE LE-4 MULTIVIEWER



### Key Features

- Single frame processing delay
- 4 auto-detect HD/SD-SDI, PAL/NTSC inputs (3G ready)
- Available in 3 versions: Composite, SD-SDI & Composite, and HD/SD-SDI & Composite
- Upgrade from SD to HD, HD to 3G via software
- 16 channels of embedded audio per SDI input
- 4 channels of discrete audio per input (optional)
- Field upgradable to allow discrete audio (AES/AA)
- Multiple outputs in DVI, HDMI or VGA (option)
- Output resolution up to 2048x1080 (incl. 1080p)
- Built-in CATx extenders for each output
  - Passive short distance receivers up to 32 feet
  - Active long distance receivers up to 115 feet
- Multiple labels per video windows - UMD, OMD, IMD, standalone labels
- Automatic input aspect ratio detection
- Built-in video, audio alarm detections - no audio, audio high/low, no video, video black, video frozen

- Apantac skin technology allows on-screen graphical elements to be designed with any graphics tool
- Front panel headphone jack with volume adjustment for audio monitoring
- Front panel buttons for quick preset recalls
- 1/2 1 RU with optional redundant power supply
- 3 year limited warranty

### Accessories

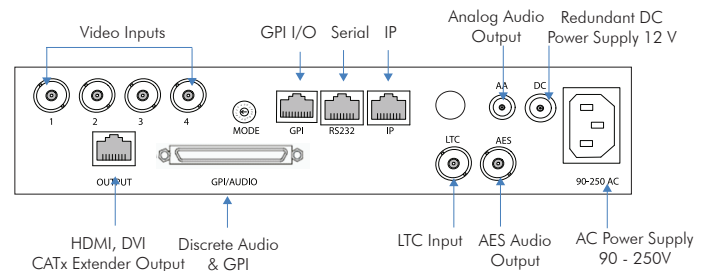
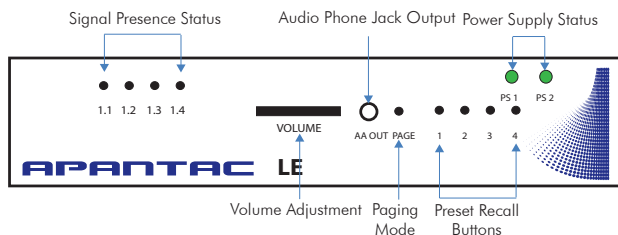
#### Standard

- 15 feet of CAT5 cable
- DVI and HDMI Short Distance Receiver
- Rack mount
- SCSI to DB9 for GPI
- RJ50 to DB9 for GPI
- RJ45 to DB9 for Serial
- CD (software, manual)

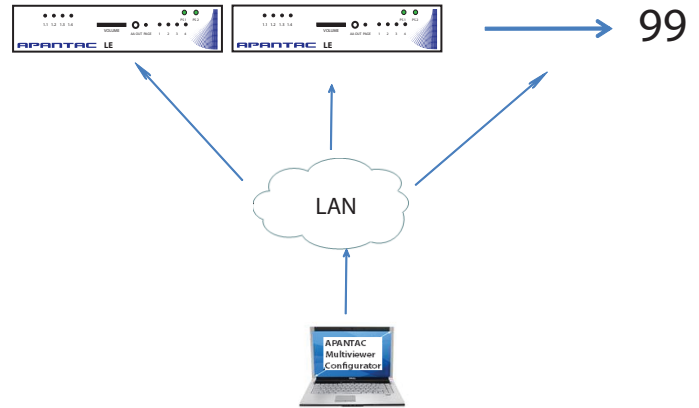
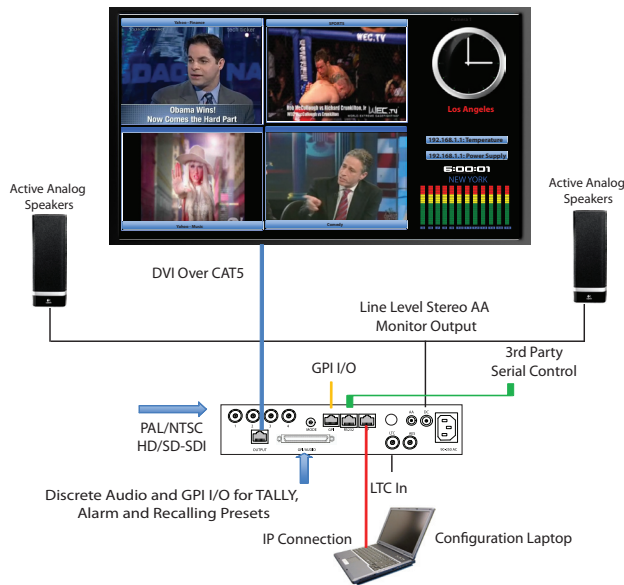
#### Options

- SDI Output (1 per module)
- HDMI, DVI, VGA Long Distance Active Receivers
- 8 channel AES balanced or unbalanced breakout
- 16 channel AA balanced or unbalanced breakout
- Redundant power supply

### TAHOMA-LE-4 Front / Rear Panel



### TAHOMA-LE-4 with 1 Output



Multiple TAHOMA-LE-4 units can be controlled simultaneously on a local area network (LAN)

### SPECIFICATIONS

Video Inputs	4 auto-detect HD/SD-SDI, Composite	AES Audio	4 channels / video input (2 pairs, balanced / unbalanced)
Connectors	BNC IEC 61169-8 Annex A	Analog Stereo Audio	4 channels / video input (balanced / unbalanced)
Total Windows	4	Embedded Audio	SMPTE-272M-A
Serial Digital	HD-SDI (SMPTE-292M) and / or SD-SDI (SMPTE-259M-C)	Outputs	1 DVI, HDMI, VGA (option), 1 SDI (option)
Equalization	120m at 2.97 Gbps, 140m at 1.485 Gbps, 400m at 270 Mbps with Belden 1694A	Output Resolution	800 x 480 - 2048 x 1080 (1080p)
Return Loss	> 15db up to 1.5Gbps > 10db up to 3G	Built-in CATx Extender	Up to 35 feet - Extend up to 115 feet (with optional active receiver)
Embedded Audio	SMPTE-272M-A	On Screen Display	Skin Technology for customizing borders, labels (4 / window), fonts, tally LEDs, clock faces, logos, UMD, OMD, IMD, dynamic UMD
Composite	NTSC (SMPTE-170M), PAL (ITU624-2)	General Purpose IO	16 inputs with DB9 connectors
Signal Level	IV nominal	Serial Port	RS232 with RS422 or RS485 option Connector: RJ45 Baud Rate Up to 115200 Supported Protocols: TSL, TSI, AXP
DC Offset	0V, +-0.1V	IP	100 Base-TX, Supported Protocols: TSL, AXP, Connector: RJ45
Input Impedance	75 ohm	Electrical	25W, 90-250V 50/60 Hz
Return Loss	40db up to 5MHz	EMI/RFI	Complies with FCC Part 15, Class A, CE, EU EMC, C-tick
Alarms	No audio, audio high / low, no video, video black, video frozen	Power	Optional redundant power supply
Control	Front panel buttons for quick preset recalls, GPIs, Apantac ASCII Protocol (AXP), Director (config & control app)	Size	1/2 width of 1RU 21.5cm (8.5") W x 37cm (14.6") D