

# LV7770 - Multi SDI Rasterizer Configurable and Affordable

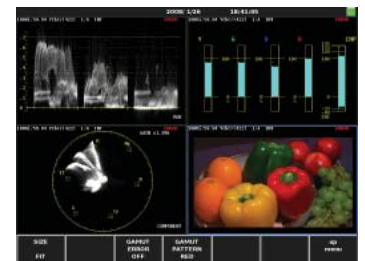
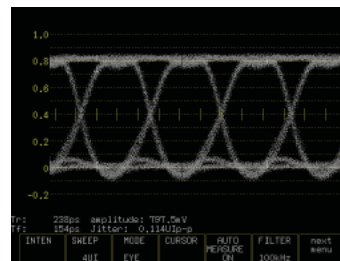
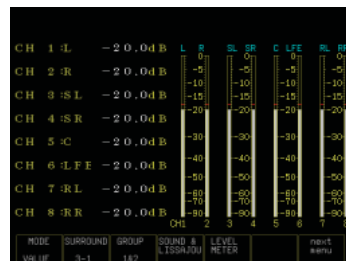
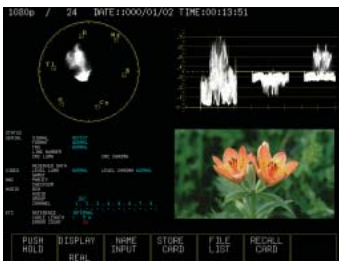


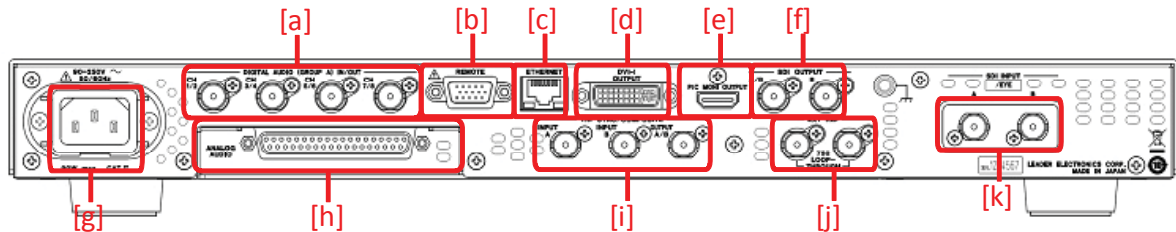
LV7770 Multi SDI Rasterizer



LV7770-01 Multi SDI Rasterizer with Remote Controller

- Accepts two 3G, SD/HD-SDI sources and provides Picture, Waveform, Vector, Audio, CINELITE II, 5-Bar and Status Displays individually and in various screens combinations.
- Supports Dual Link and 3G Level A & B Operation.
- Data Analysis, Settable Error Levels with Monitoring, Alarms and Error Logs with Time Code.
- Platform can monitor and display two sources at the same time in two or four split screen displays.
- As the standard, digital audio supports full Loudness, Lip Sync and A/V Delay Measurements, in addition to providing Lissajous and Bar Graph displays.
- Supports options including Physical Layer Testing with Eye Pattern, Digital & Analog Audio and Composite Inputs.
- Autonomous Monitoring and Error Detection; Alarm for Audio Silence/Video Freeze & Video Black.
- USB connector allows the use of a flash drive for storing captured screens, presets and software/firmware updates.
- DVI-D Rasterized Output displays to External LCD monitor.
- HDMI Program Output of the selected source is provided.
- Ethernet connectivity allows for remote control over the web. Supports TELNET, FTP, HTTP and SNMP.
- USB connector allows the use of a flash drive for storing capture screens, presets and software/firmware updates.
- Universal AC Power Supply allows for worldwide use.





Rear Panel shown with Eye & Jitter Pattern Option, Analog Audio Option, Digital Audio In/Out Option and Composite Inputs Option

- (a) **8-CH DIGITAL AUDIO AES/EBU IN/OUT:** Provides 8 channels of AES/EBU inputs/outputs.
- (b) **REMOTE:** Remote connector provides remote control of preset selections.
- (c) **ETHERNET CONNECTIVITY:** Ethernet remote control, web access and remote reporting.
- (d) **XGA OUTPUT:** Standard DVI-D Computer Monitor Rasterizer Output emulates built-in screen display.
- (e) **HDMI OUTPUT:** A Picture-Only output can send the selected SDI input source to an external HDMI monitor.
- (f) **SDI INPUTS:** 2 Serial Inputs support 3G, SD/HD SDI operation (auto-select). Picture, Waveform, Vector, CINELITE II, 5-Bar, Status Displays.
- (g) **UNIVERSAL POWER SUPPLY:** 90-250 vac (50-60 Hz).
- (h) **ANALOG AUDIO:** Provides 8 channels of Analog Audio I/O.
- (i) **COMPOSITE INPUTS:** Accepts 2 Composite Inputs and provides Switched Monitor Output of the selected composite source.
- (j) **EXT REF INPUT:** EXT REF Loop-through Input accepts Standard Tri-Level Sync and Black Burst.
- (k) **EYE PATTERN OPTION:** Provides Eye & Jitter Measurements.

## AVAILABLE OPTIONS:

- **LV7770E:** Provides Eye & Jitter measurements for 3G, SD/HD SDI with LV7770.
- **LV5770-OP03A COMPOSITE INPUTS OPTION:** Provides two composite inputs with switched monitor output for Picture, Waveform and Vector test screens for NTSC and PAL composite systems. It accepts analog Tri-level Sync & Black Burst signals for waveform display.
- **LV5770-OP09 EYE PATTERN OPTION:** Provides eye & jitter measurements for 3G, SD/HD SDI inputs. SMPTE recommended filters and auto-measurement is provided.
- **LV5770-OP41D DOLBY OPTION:** Adds Dolby Digital Support and Dolby Metadata Analysis.
- **LV5770-OP42 ANALOG AUDIO OPTION:** Provides 8 channels of analog audio I/O. Selected digital audio (discreet or embedded) is converted to analog audio.
- **LV7770-OP70 8ch DIGITAL AUDIO OPTION:** Provides additional 8 channels of AES/EBU I/O through selectable menu. Outputs embedded audio as discreet AES/EBU.

Leader Instruments Corporation  
 6484 Commerce Drive - Cypress, CA 90630  
 email: [Sales@LeaderAmerica.com](mailto:Sales@LeaderAmerica.com) web: [www.LeaderAmerica.com](http://www.LeaderAmerica.com)

**LEADER**  
 Technology Innovator